

The motor home that works extra hard.  
So you can take it easy.



2007   
**BOUNDER**<sup>®</sup>  
CLASS A GAS

 **FLEETWOOD**<sup>®</sup>  
*Driven to Explore*

Trustworthy Name | Maximum Functionality | Full-Body Paint | Power Platform Construction | Large Tank Capacities

# Bounder rewrote the rules. And kept on rolling.

The trailblazing Bounder is one of the top-selling motor homes on the road – even though it was introduced more than 20 years ago. Then, as now, we designed Bounder to be exceptionally practical and value-oriented. For example, it comes standard with long-wearing full-body paint, a feature usually found in higher-priced diesel motor homes. It's no wonder owners continue to be wild about Bounder – functionality never goes out of style.



Bounder 35E shown in River Rock interior décor with Plantation Cherry Wood Finish.





**A COMPUTER WORKSTATION** is easy to set up. Just plug your laptop (not included) into the power and phone jacks, and e-mail friends and family. And with GPS software (not included), your laptop can help you navigate your way around this great country.



**A PULL-OUT TRAY** holds everything the co-pilot needs on the road – sunglasses, computer supplies, pens, even earplugs for those long drives when the pilot tests out his karaoke skills.



**THE ENTERTAINMENT CENTER** features a 27" flat screen TV and a place to store the DVD player. Just pop some popcorn and it's show time wherever you are camping.



**THE FLEXSTEEL LOUNGE RECLINER WITH OPTIONAL ULTRALEATHER** is the perfect, comfy place to lose yourself in a good book. Shown with optional Ultraleather™ covering that's softer and easier to clean than leather.

**ENTRY ASSIST HANDRAILS** are placed on the inside and outside of the coach to help you enter and exit easily.





**FULL EXTENSION DRAWERS** roll all the way out, so you can store things in the very back of the drawer.

**DOUBLE BOWL SINK,** made of scratch-resistant stainless steel, is recessed into the countertop so you can wipe the crumbs into the sink. The single-lever faucet with a separate pull-out sprayer makes dishwashing a bit easier.



**PULL-OUT CUTTING BOARD** makes the perfect place to trim those juicy steaks before you put them on the grill. A removable sink cover gives you even more space for slicing and dicing.



#### **THE FREE-STANDING DINETTE**

(optional) sits by a large picture window. Every night, you've got the best table in town for dinner by sunset.



**CONVECTION MICROWAVE** (optional) cooks fast like a microwave, and also bakes and broils like a convection oven.



#### **NORCOLD® REFRIGERATOR**

(optional) with a whopping 12 cubic feet of space to store your favorite foods and drinks. On a hot day, sip a cold glass of iced tea and you'll appreciate the icemaker. A Dometic® side-by-side 8 cu. ft. refrigerator is standard.



**BOUNDER**



# Nuts and bolts. Not bells and whistles.

If you're looking for frivolous frills, stop right here. Because Bounder provides exactly what you need – no more and no less. Our designers included dozens of big and little features that make your life more comfortable. Things like a folding range cover to give you more countertop space for party trays. Overhead cabinets deep enough for full-size dinnerware, so you don't have to eat off salad plates. And handy hooks for all your keys. In short, things many competitors just didn't consider.



**COUNTERTOP EXTENSION** flips up when you need a little extra space – it's ideal for washing dishes. Once the dishes are done, flip it back down.

# Function never felt so good.

Because function is ultimately about comfort, we've designed Bounder to be super-comfortable. You'll enjoy tall 7-foot ceilings and plenty of space, even in traditionally small areas like the galley and bathroom. And it's comforting to pack a lot of your favorite things, so we've converted every spare inch into usable storage space. Why not take your Elvis collectibles to Graceland?



**THE BEDROOM** beckons with a queen-size Restonic® mattress with high-quality innerspring construction. The handsome nightstands hold your hot chocolate as you read in bed by the light of adjustable reading lights.





**THE SPACIOUS WARDROBE** is lined with cedar and has an automatic light when opened. Also comes with a mirror on the door to check your outfit.



**THE SHOWER** has a skylight overhead, and a low-step threshold so it's easy to enter. The water saver valve helps you conserve water when you're dry camping.



**STORAGE SPACE** under the bed is ideal for large boxes, extra linens or seasonal items – like your Christmas decorations!



◀ **THE BATHROOM** is delightfully spacious, especially in the E model (shown). With generous storage for your toiletries and beauty supplies, you'll have plenty of room to groom.

**A WINDOW NOOK WITH 20" TV** ▶ overhead is standard in every Bouncer. The nook works perfectly as a vanity area or desk.



# Tanks a lot, Bounder.

With its extra-large tank capacity, Bounder can hold up to 85 gallons of fresh water, 58 gallons of grey water and 42 gallons of black water. That means you can camp without hookups for extended periods of time. Bounder gives you the freedom to go where you want.

## Power Platform Construction for Strength

Fleetwood's patented Power Platform begins with two 10-inch steel I-beams welded to the chassis, with steel outriggers. Together, they create a basement for the fluid tanks and storage, while supporting the floor, walls and roof with a rigid metal frame. This complements the chassis to make it even stronger.

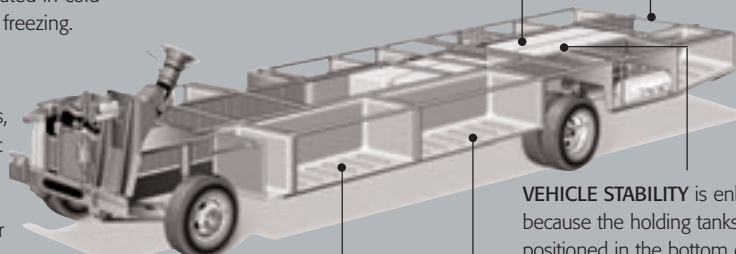
**HOLDING TANKS** are enclosed between the upper and lower basement floors so they can be heated in cold weather to help prevent freezing.

**BASEMENT STORAGE** features aluminum doors, lined with molded plastic so you can hose the compartments out. They are also individually lit for after sunset.

**LARGE TOWING CAPACITY†** lets you tow most vehicles with ease.

**VEHICLE STABILITY** is enhanced because the holding tanks are positioned in the bottom center of the platform.

**EZ STORE COMPARTMENT** is the perfect place for very long items such as fishing poles or ladders. It moves with the slide-out so you don't have to crawl underneath.



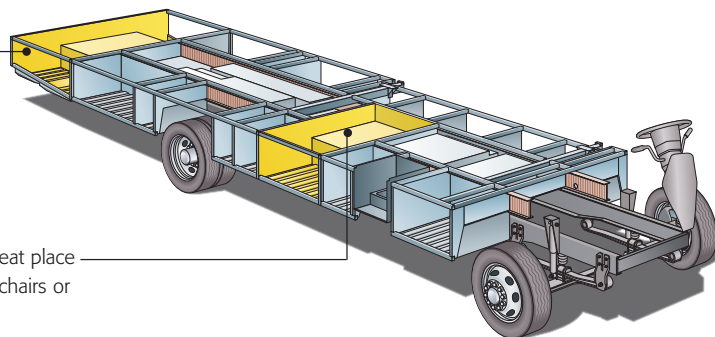
† The chassis manufacturer recommends the installation of a supplemental brake control system to activate the brakes on the vehicle or trailer you are towing. Hitch receiver ratings expressed are maximum for the hitch receiver installed and may require the purchase of additional equipment that is dependent on the weight of the towed load. Consult with hitch receiver manufacturer for further information.

## Strength and even More Storage. That's our Power Platform Plus.

Our Power Platform Plus construction delivers the best of both worlds — an ultra-strong chassis along with a ton of storage space. We carved out every available space for extra storage, and reinforced the framing around the storage areas. Each storage area is lined with molded plastic so it can be hosed out easily, and individually lit so you can retrieve your gear after dark. The Power Platform Plus (available on select models) delivers all the benefits of the Power Platform, plus:

**PASS-THROUGH STORAGE COMPARTMENT** maximizes every inch of space so you can store large bulky items, such as folding tables. The pass-through design allows you to take your gear out from either side.

**STORAGE MAXIMIZER** is another great place to store bulky items such as folding chairs or portable fire pits.



Drawings are for illustrative purposes only to highlight aspects of motor home construction. Actual motor home design depends on model and is subject to change.



## Why Fleetwood?



### Passion

We're truly passionate about the RV lifestyle. Fleetwood was founded by RV enthusiasts, and that tradition continues today.



### Quality

There's no cutting corners. Skilled craftsmen build every Fleetwood RV for maximum durability and longevity.



### Service

Help is nearby. When you need an upgrade or repair, you'll find facilities all across North America and more than 1,100 dealers ready to assist you.



### Warranty

Breathe easier with RV Ownercare, one of the best warranties in the industry. See your Fleetwood dealer for details.



### Trust

More people trust Fleetwood. After all, we've spent over 50 years perfecting RVs, earning the loyalty of generations of RVers.



# Bounder's better on the outside.

There are so many great features on the outside of Bounder, we don't have enough photos to show you all of them. Things like the 4-point automatic leveling system, the heated mirrors, and Bounder's nifty wipers that don't block your view when you're parked. Best of all is the tall windshield that gives you an expansive view of the majestic scenery. But you'll have to experience that in person.

## Exterior Awning

makes a pleasant front porch to sit under on a sunny day. (Electric version is optional.)

## Full-Body Paint

uses DuPont® paint in a two-step process covering the entire body (excluding roof) of the Bounder to provide a more handsome and weather-resistant finish.

## Storage Compartments

are lighted and include single paddle latches so you can open them with one hand.

## Dual A/C Units

are mounted on the roof to provide maximum cooling capabilities and plenty of storage.

## Tuff-Ply Roof

is UV resistant, durable, easy to clean, and doesn't scratch like many competitors' fiberglass roofs.



†The chassis manufacturer recommends the installation of a supplemental brake control system to activate the brakes on the vehicle or trailer you are towing. Hitch receiver ratings expressed are maximum for the hitch receiver installed and may require the purchase of additional equipment that is dependent on the weight of the towed load. Consult with hitch receiver manufacturer for further information.



**UTILITY COMPARTMENT** is the central place to hook up to water, sewer, phone and cable. The sprayer is handy for hosing out the compartment— or spraying the sand off your furry canine friend.



**HEADLIGHTS** are as large as they come, and they add to the stylish look of the Bounder.



**REAR CAMERA** sends a video and one-way audio feed from the back of the coach to the driver. The driver can hear the person assisting him, but not vice versa (which is sometimes a good thing)!

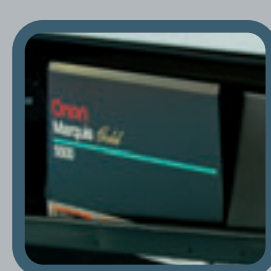


## EZ STORAGE

**COMPARTMENTS** move with the slide-out so you don't have to crawl underneath. They're even long enough to store your fishing poles.



**WATER FILTER** for whole coach water filtration is located in an exterior compartment for quick filter replacement. Even your optional ice maker and washer/dryer (select models) get filtered water.



**5.5 KW ONAN® MARQUIS GOLD GENERATOR** runs extra-quietly to provide 110V power when you need it.

# Bounder is covered from top to bottom.

While many competitors only paint a portion of the coach, Fleetwood uses full body paint on the Bounder. And we use DuPont® paint, usually reserved for high-end coaches. It not only protects the coach, it gives the Bounder its well-known handsome look. Choose your favorite color scheme.

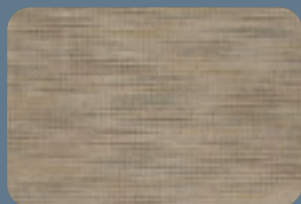
## Bahama Blues



(Standard)



(Optional)



Sofa Bed & Recliner



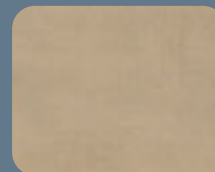
Dinette Cushions



Ultraleather™ Driver  
& Front Passenger  
Seats, Sofa &  
Recliner (Optional)



Bedspread  
& Headboard



Throw Pillows  
& Pillow Shams

## Beige Bounty\*

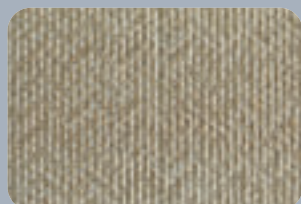
Drawing is for illustrative purpose only to highlight aspects of Bounder construction. Actual RV design depends on model and is subject to change.



(Standard)



(Optional)



Sofa Bed



Dinette Cushions  
& Recliner



Ultraleather™ Driver  
& Front Passenger  
Seats, Sofa &  
Recliner (Optional)



Bedspread  
& Headboard



Throw Pillows  
& Pillow Shams



# Bounder is beautiful on the inside.

Since Bounder is your home away from home, we carefully decorated it to feel like one too. You'll find the décor welcoming, easy to clean and durable. In fact, our Flexsteel® furniture is covered by a lifetime warranty on the frame. So go ahead, pick your interior color scheme.



Summit Ash



Plantation Cherry

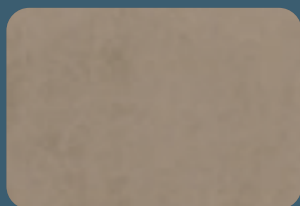
## River Rock



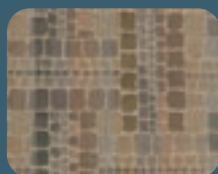
(Standard)



(Optional)



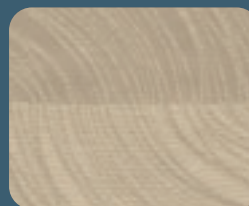
Sofa Bed



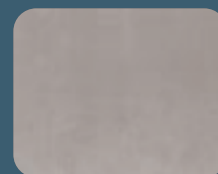
Dinette Cushions  
& Recliner



Ultraleather™ Driver  
& Front Passenger  
Seats, Sofa &  
Recliner (Optional)



Bedspread  
& Headboard



Throw Pillows  
& Pillow Shams

## Beige Bounty II\*



(Optional)



(Optional)

## Setting The Standard In Motor Home Quality

Fleetwood® prototypes are exposed to thousands of miles of durability testing. Those components that don't survive are redesigned until they do. This sets our standard in safety and durability.

Fleetwood's patented Power Platform supports the body with a rigid frame that reinforces the chassis to make it even stronger. This allows Fleetwood to offer quad slide-outs.

For each outer wall, Fleetwood uses one seamless, solid piece of its exclusive Tuff-Coat® fiberglass composite. It resists UV rays, cracks and impacts. Our products look newer longer and that's a big plus at resale time.

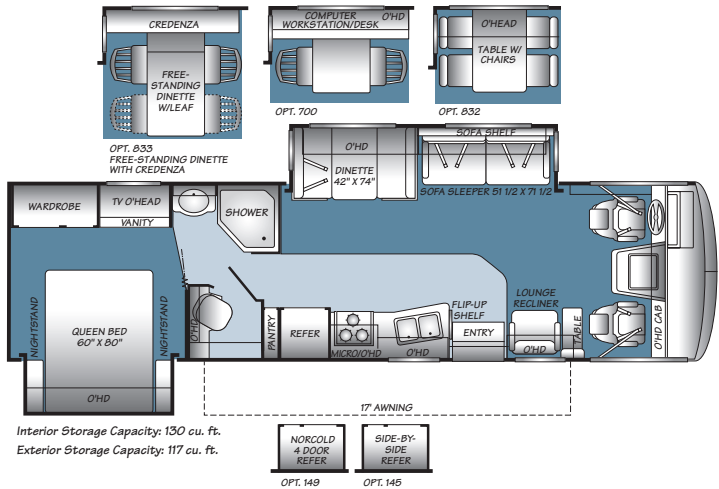
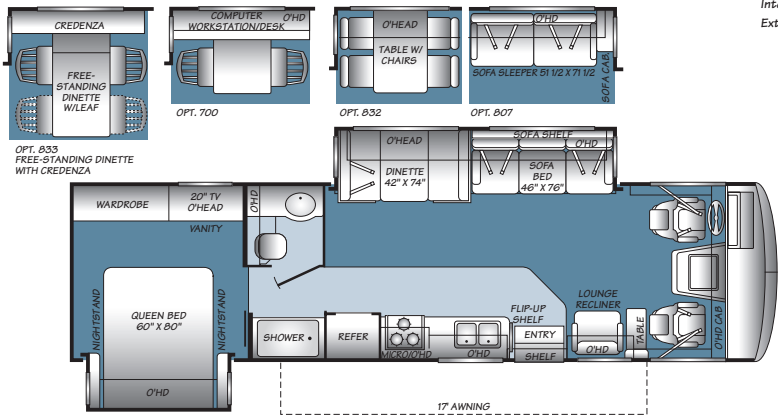
To assure a strong, weather-resistant structure, Fleetwood Vacu-bonds® the sidewalls, floor and ceiling to a durable aluminum or steel frame. The Vacu-bond® process is unmatched by many competitors.

Fleetwood's sinks and shelves are designed to handle full-size kitchenware. Few competitors can say the same.

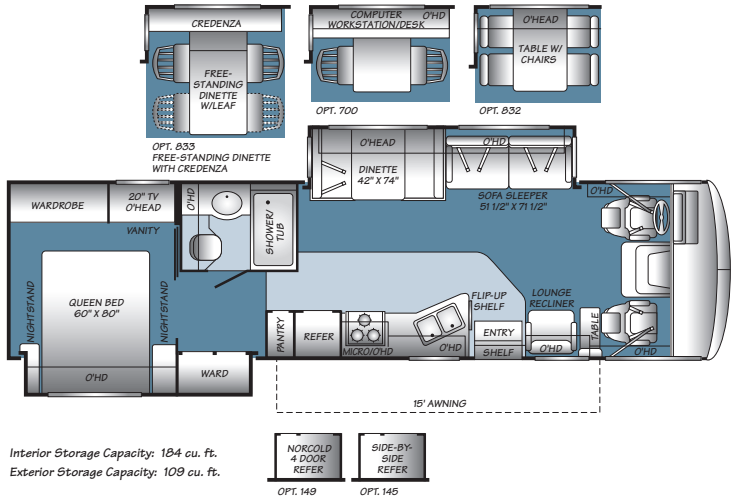
\*Beige Bounty interior is available with either the Beige Bounty or Beige Bounty II exteriors.

# Bounder Floor Plans

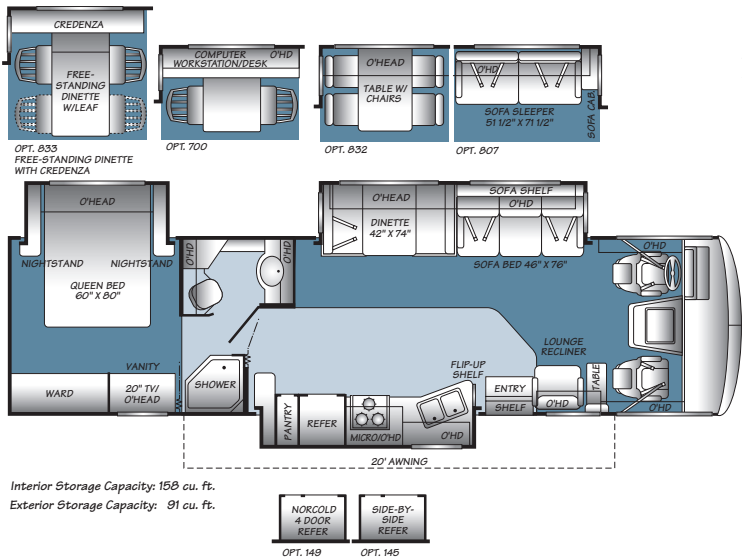
## 32K Double Slide-out



## 32W Double Slide-out



## 33R Double Slide-out

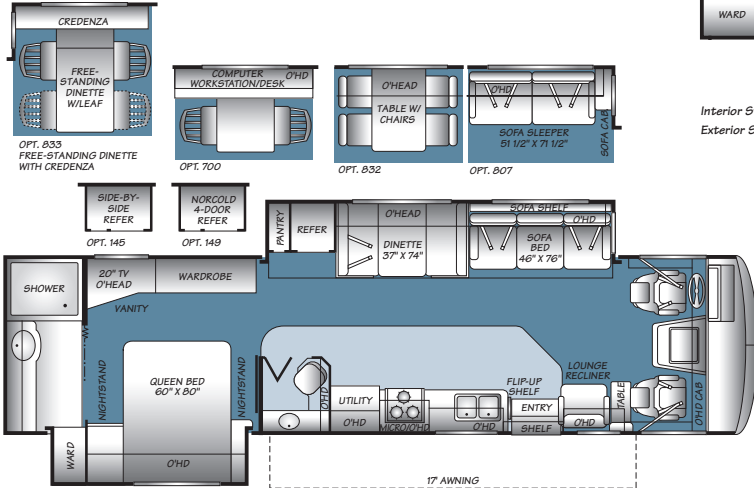


## 34F Triple Slide-out

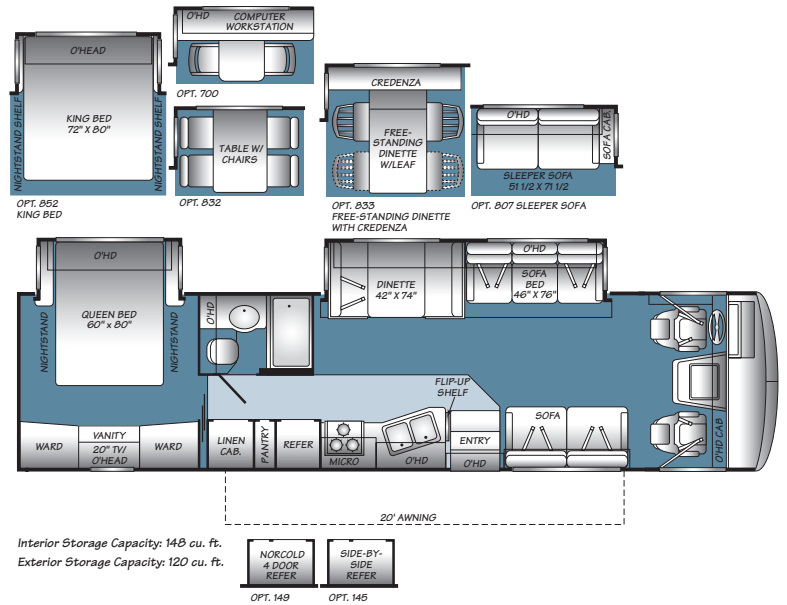
Seat belt configuration may vary depending on options chosen.



### 34G Double Slide-out

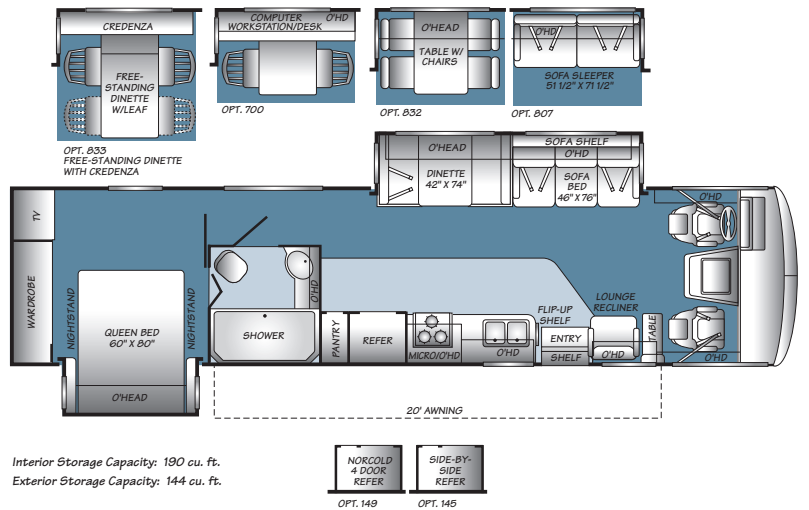


Interior Storage Capacity: 184 cu. ft.  
Exterior Storage Capacity: 129 cu. ft.



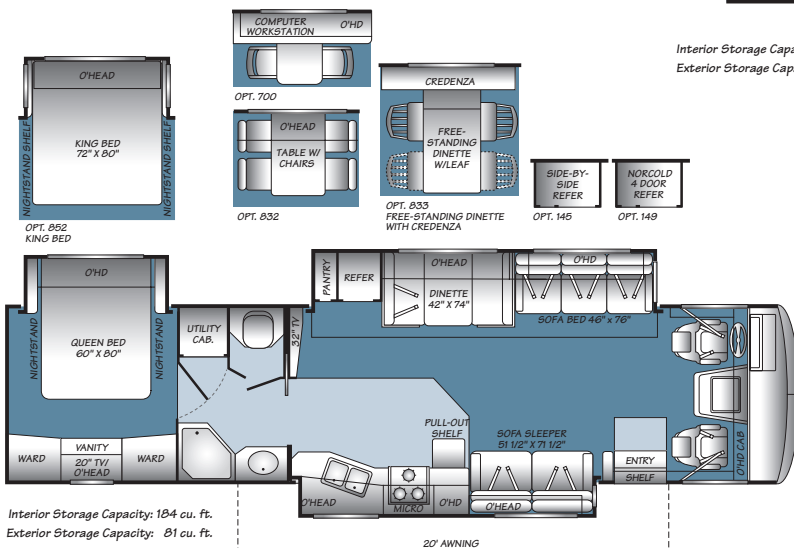
### 35E Double Slide-out

### 36Z Double Slide-out



Interior Storage Capacity: 190 cu. ft.  
Exterior Storage Capacity: 144 cu. ft.

### 38P Triple Slide-out



Interior Storage Capacity: 184 cu. ft.  
Exterior Storage Capacity: 81 cu. ft.

# Standard Features and Options

2007 Bounder

## INTERIOR THROUGHOUT

• 120V/12V AC/DC Converter	S
• 120V/12V Wire Raceways	S
• 3 Interior Décor's	S
• 3-Way Water Pump Switch	S
• 34,000 BTU Furnace (30,000/20,000 BTU on 34F)	S
• 6 Gallon Quick-Recovery Water Heater w/Direct Spark Ignition	S
• Central Electrical Panel	S
• Coordinated Cabinet Hardware	S
• Decor Lighting	S
• <b>Deluxe Roller Bearing, Full Extension Drawer Guides &amp; Transit-Ship Locks</b>	S
• Dual 6V Deep-Cycle House Batteries	S
• Dual Roof A/C High Efficiency w/Solar Panel and Chill Grills	S
• Energy Management System	S
• Fluorescent Ceiling Lights w/Dual Bulbs	S
• Incandescent Lighting	S
• <b>Plush Wall-to-Wall Carpet w/Carpet Pad</b>	S
• Radius Corner Cabinetry	S
• Solid Divider Doors	S
• Telephone Jack in Dash	S
• TV Antenna	S
• Wall Switches	S
• Water Heater Bypass	S
• <b>Whole Coach Water Filtration System</b>	S
• Wood Drawers	S
• 10 Gallon Water Heater (Gas/Electric)	O
• Computer Work Station	O
• CSA Package	O
• Satellite Radio	O
• Washer/Dryer (Select Models)	O

## DRIVER CONVENIENCE

• 3-Point Seat Belts at Driver & Front Passenger Seats	S
• <b>AM/FM Radio w/CD Player, Satellite Radio Ready</b>	S
• Auto A/C Heater Combo	S
• Auxiliary Start Circuit	S
• Battery Shut-Off Switch	S
• CB Radio Ready	S
• Cruise Control	S
• Dash Fans	S
• <b>Double Swivel Sun Visors w/Map Pockets</b>	S
• <b>Driver/Front Passenger Captain's Chairs with Reclining Back/Slide Controls</b>	S
• Intermittent Wiper Control	S
• Low Profile Engine Cover	S
• Monitor Panel in Dash	S
• Radio Switch-Main/Auxiliary Power	S
• Soft-Surface Automotive Dash	S
• Tilt Steering Wheel	S
• Ultraleather® Driver and Front Passenger Chairs	O
• DSS Manual Lift Satellite Dish	O
• DSS Auto Seek Satellite Dome	O

## LIVING ROOM

• Entry Assist Handle	S
• <b>Front 27" Flat Screen Stereo TV in Overhead</b>	S
• Lounge Recliner	S
• Residential Seat Styling	S
• DVD Player	O

## GALLEY

• 1.4 cu. ft. Over the Range Microwave Oven w/Electronic Touch Pad	S
• 3 Burner Cook Top	S
• <b>8 cu.ft. Dometic® Double Door Refrigerator</b>	S
• Adjustable Cabinet Shelves (Select Cabinets)	S
• Demand Water Pump with Filter	S
• Fan-Tastic® Power Roof Vent	S

• Flat Panel Base Cabinet Doors	S
• Folding Range Cover	S
• Large Drawers Under Dinette	S
• <b>Large, Double Stainless Steel Sink</b>	S
• Raised-Panel Cabinet Doors	S
• Single Lever Galley Faucet w/Pullout Head	S
• Sink Cover/Cutting Board	S
• Vinyl Flooring	S
• Waste Basket	S
• 12 cu. ft. Side-by-Side Dometic® Refrigerator w/Ice Maker (Select Models)	O
• 3-Burner, High-Output Range w/Oven	O
• Convection Microwave Oven	O
• Free-Standing Table & Chairs	O
• Norcold® 4-Door Refrigerator w/Ice Maker (Select Models)	O

## BEDROOM

• <b>20" Flat Screen TV</b>	S
• Bedspread w/Decor Pillows	S
• Pleated Shades	S
• Rear Speakers	S
• Restonic® Innerspring Mattress	S
• Second Phone Jack	S
• Wardrobe Lighting	S
• Torque Windows	O

## BATHROOM

• Coordinated Bath Accessories	S
• Fan-Tastic® Power Roof Vent w/Wall Switch	S
• <b>Glass Shower Enclosure w/Skylight and Lower-Step Threshold</b>	S
• Hardwood Bath Door/Trims	S
• Molded Tub/Shower Enclosure	S
• Porcelain Toilet w/Water Saver	S
• Skylight in Tub/Shower	S
• Toilet Tank San-T-Flush™ System	S

## SAFETY/CONVENIENCE

• 10 ABC Fire Extinguisher	S
• Carbon Monoxide Detector/Alarm	S
• Propane Detector/Alarm	S
• Smoke Detector/Alarm	S

## EXTERIOR THROUGHOUT

• 3 Colorway Graphics to Match Decor	S
• 5.5 kW Onan® Generator	S
• 50 Amp Service (Optional on 32W & 33R, 30 Amp Standard on 32W & 33R)	S
• Awning Rail/Drip Molding (Both Sides)	S
• Dual Battery Charge Control	S
• Dual Pane Windows w/Screens	S
• Dual Patio Receptacles	S
• Fiberglass Front/Rear Caps	S
• <b>Full Body Paint</b>	S
• <b>Heated Water &amp; Holding Tank Compartments</b>	S
• Mud Flaps	S
• Park Cable Receptacle	S
• Patio Awning	S
• Single Motor Windshield Wipers w/Wet Arm	S
• Utility Compartment w/Exterior Shower	S
• Valve Extenders	S
• Wheel Simulators (Aluminum Wheels on Ford® Chassis on 33R, 34F, 35E & 36Z)	S
• Large Headlamps	S
• ABS Wheel Well Trims	S
• TV/12V Jack in Doorside Compartment	S
• Electric Awning	O
• Rear Vision Camera	O

## AUTOMOTIVE

• <b>4-Point Automatic Leveling Jacks</b>	S
• Large, Curved Aerodynamic Bonded in Windshield	S
• Steel Surface on Bulkhead	S
• Trailer Hitch w/7 Point Electrical Hook-Up†	S
• Underhood Utility Light	S

## SAFETY/CONVENIENCE

• Entry Door w/Screen Door & Deadbolt Lock	S
• Porch Light (Doorside)	S
• Power Entry Step	S
• <b>Remote Heated Rear View Mirrors</b>	S
• Roof Ladder	S

## STORAGE

• Continuous One-Piece Compartment Bulb Seal	S
• <b>EZ-Store Compartment on Living Area Slide-Outs</b>	S
• Gas-Lift Strut Supports	S
• Hidden, Stainless Steel Latch Rods	S
• Insulated Aluminum Luggage Doors w/Single Paddle Metal Latches & Stainless Steel Hinges	S
• Lighted Luggage Compartments	S
• <b>Rotomolded Polyethylene Luggage Compartments</b>	S

## BODY STRUCTURE

• Aluminum Interlocking Floor/Wall/Ceiling Framing	S
• <b>Basement Floor Configuration</b>	S
• Royal Tuff-Ply Radius Roof w/Ducted A/C	S
• <b>Vacu-bond® Upper/Lower Floors</b>	S
• <b>Vacu-bond® Walls w/Smooth, High-Gloss Exterior Fiberglass</b>	S

## FLEETWOOD ADVANTAGES

• <b>Complete TuffPEX® Plumbing System</b>	S
• <b>Power Platform Construction (Fleetwood Exclusive)</b>	S
• <b>Royal Tuff-Ply UV-Resistant Heat/Cold Insulated Roofing Technology</b>	S
• <b>Vacu-Bond® Upper/Lower Floors</b>	S
• <b>Vacu-Bond® Walls w/Smooth High-Gloss Exterior Tuff-Coat® Fiberglass</b>	S



Bold Denotes Fleetwood's Key Features. S = Standard O = Optional

\*\* CSA standards may require substitution or deletion to achieve conformance.



# Weights & Measurements

2007 Bouncer

## FORD® CHASSIS

MODELS	32K	32W	33R	34F	34G	35E	36Z	38P
Engine Displacement (Liters)	6.8	6.8	6.8	6.8	6.8	6.8	6.8	N/A
Wheelbase (Inches)	208"	208"	208"	228"	228"	228"	228"	N/A
GVWR (lbs) <sup>1</sup>	20,500	20,500	22,000	22,000	22,000	22,000	22,000	N/A
Front GAWR (lbs) <sup>2</sup>	7,000	7,000	7,500	7,500	7,500	7,500	7,500	N/A
Rear GAWR (lbs) <sup>2</sup>	13,500	13,500	14,500	14,500	14,500	14,500	14,500	N/A
Base Weight (lbs) <sup>3</sup>	17,150	16,800	17,550	18,150	17,350	18,150	18,350	N/A
GCWR (lbs) <sup>4</sup>	25,500	25,500	26,000	26,000	26,000	26,000	26,000	N/A
Hitch Rating Weight (lbs) <sup>†</sup>	5,000	5,000	5,000	5,000	5,000	5,000	5,000	N/A
Tongue Weight (lbs) <sup>†</sup>	500	500	500	500	500	500	500	N/A
Fuel Capacity (gal)	75	75	75	75	75	75	75	N/A

## WORKHORSE™ CHASSIS

MODELS	32K	32W	33R	34F	34G	35E	36Z	38P
Engine Displacement (Liters)	8.1	8.1	8.1	8.1	8.1	8.1	8.1	8.1
Wheelbase (Inches)	208"	208"	208"	228"	228"	228"	228"	242"
GVWR (lbs) <sup>1</sup>	20,700	20,700	22,000	22,000	22,000	22,000	22,000	24,000
Front GAWR (lbs) <sup>2</sup>	7,500	7,500	8,000	8,000	8,000	8,000	8,000	9,000
Rear GAWR (lbs) <sup>2</sup>	13,500	13,500	14,500	14,500	14,500	14,500	14,500	15,500
Base Weight (lbs) <sup>3</sup>	17,250	17,150	17,800	18,350	17,750	18,350	18,550	19,000
GCWR (lbs) <sup>4</sup>	25,700	25,700	26,000	26,000	26,000	26,000	26,000	30,000
Hitch Rating Weight (lbs) <sup>†</sup>	5,000	5,000	5,000	5,000	5,000	5,000	5,000	6,000
Tongue Weight (lbs) <sup>†</sup>	500	500	500	500	500	500	500	600
Fuel Capacity (gal)	75	75	75	75	75	75	75	75

## DIMENSIONS & CAPACITIES

MODELS	32K	32W	33R	34F	34G	35E	36Z	38P
Overall Length <sup>5</sup>	33' 3"	33' 3"	34' 3"	34' 9"	35' 3"	36' 3"	37' 3"	38' 3"
Overall Height (with A/C)	12' 7"	12' 7"	12' 10"	12' 10"	12' 10"	12' 10"	12' 10"	12' 10"
Overall Width (maximum) <sup>6,7</sup>	102"	102"	102"	102"	102"	102"	102"	102"
Interior Height (maximum)	84"	84"	84"	84"	84"	84"	84"	84"
Interior Width (maximum)	96"	96"	96"	96"	96"	96"	96"	96"
Fresh Water Holding Tank (gal)	85	85	85	85	85	85	85	85
Grey Water Holding Tank (gal)	58	58	58	58	58	58	58	58
Black Water Holding Tank (gal)	42	42	42	42	42	42	42	42
Appliance Propane Tank (gal) (WC) <sup>8</sup>	25	25	25	25	25	25	25	25
Water Heater Tank (gal)	6	6	6	6	6	6	6	6

**Liquid Weight Reference:** Water (gal) = (8.3 lbs/3.8 kgs) Fuel (gal) = (6.1 lbs/2.8 kgs) Propane (gal) = (4.2 lbs/1.9 kgs)

**Metric Conversion:** Multiply pounds x 0.453 to obtain kilograms. Multiply gallons x 3.785 to obtain liters. Multiply liters x 61 to obtain cubic inches.

## FORD/WORKHORSE CHASSIS

**Model:** Ford®/Workhorse™

**Engine:** 6.8L Triton® V10/8.1L Vortec™ V8

**Torque:** 457 lb-ft at 4750 RPM/455 lb-ft at 3200 RPM

**Alternator Amps:** 130 Amp/145 Amp

**Horsepower:** 362 HP/340 HP

**Transmission:** 5-Speed Automatic with Overdrive/6-Speed Automatic with Overdrive

- GVWR (Gross Vehicle Weight Rating) is the maximum permissible weight of this fully loaded motor home. The GVWR is equal to or greater than the sum of the (UVW) unloaded vehicle weight plus the (CCC) cargo carrying capacity.
- GAWR (Gross Axle Weight Rating) is the maximum permissible loaded weight a specific axle is designed to carry.
- Base Weight is the estimated weight of the motor home without fuel, options, water, cargo or passengers.
- GCWR (Gross Combined Weight Rating) is the value specified by the motor home manufacturer as the maximum allowable loaded weight of this motor home with its towed vehicle. Towing and braking capacities may be different. Refer to Fleetwood and chassis manufacturer's manuals for complete information.
- Length taken from front bumper to rear bumper (excludes accessories).
- Excludes safety equipment and awnings.
- Motor homes feature a body-width over 96" which will restrict your access to certain roads. Before purchasing, you should research any state and/or province road laws which may affect your usage.
- Tank manufacturer's listed water capacity (WC). Actual propane capacity is 80% of water listing as required by the safety code.

† The chassis manufacturer recommends the installation of a supplemental brake control system to activate the brakes on the vehicle or trailer you are towing. Hitch receiver ratings expressed are maximum for the hitch receiver installed and may require the purchase of additional equipment that is dependent on the weight of the towed load. Consult with hitch receiver manufacturer for further information.

N/A = Not Available at time of printing.

UVW and CCC are found on the cargo carrying capacity label in each RV.

**IMPORTANT— PLEASE READ:** Product information, photography and illustrations included in this publication were as accurate as possible at the time of printing. For further product information and changes, please visit our website at [www.fleetwoodrv.com](http://www.fleetwoodrv.com) or contact your local Fleetwood dealer. Prices, materials, design and specifications are subject to change without notice. All weights, fuel, liquid capacities and dimensions are approximate. Fleetwood has designed its recreational vehicles to provide a variety of uses for its customers. Each vehicle features optimal seating, sleeping, storage and fluid capacities. The user is responsible for selecting the proper combination of loads (i.e. occupants, equipment, fluids, cargo, etc.) to ensure that the vehicle's capacities are not exceeded.



#### RV OWNERCARE\*

Limited one-year/15,000-mile coach warranty and three-year/50,000-mile structural warranty, whichever occurs first, and it is fully transferable for the first 12 months. RV OWNERCARE is one of the RV industry's most comprehensive programs and includes systems, appliances, components and construction, with no deductible and no service charge. RV OWNERCARE coverage is provided from a company that will be around in the future to service your needs. See your nearest Fleetwood dealer for a full explanation of benefits and restrictions.

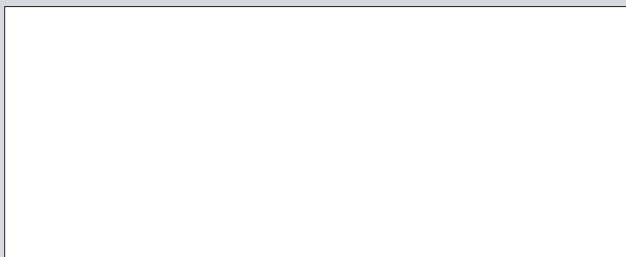
#### CONTACT US

To locate a dealer near you, visit our website at [www.fleetwoodrv.com](http://www.fleetwoodrv.com) or call 1-800-444-4905. We can also be contacted at Fleetwood Customer Relations, P.O. Box 1007, Decatur, IN 46733.

#### FLEETWOOD TRAVELCADE CLUB

As a Fleetwood owner, you're eligible to become a member of the Fleetwood Travelcade Club. It's a perfect way to meet other Fleetwood owners who love to travel across America and share in the RV lifestyle. Call (877) 577-2560 or visit our website at [www.fleetwoodrv.com/owners\\_clubs](http://www.fleetwoodrv.com/owners_clubs) to learn more and join the fun! For Boulder specific club information visit: Bounders of America at [www.boulder.org](http://www.boulder.org) or Bounders United at [www.boulder.net](http://www.boulder.net).

#### YOUR LOCAL FLEETWOOD DEALER IS:



\*For complete info see your Fleetwood dealer.

©2006. Fleetwood Enterprises, Inc.  
Printed in the USA. Inventory Control Number BDR07B2, 11/06.  
Model Year 2007, Second Edition.

#### IMPORTANT—PLEASE READ

Product information, photography and illustrations included in this publication were as accurate as possible at the time of printing. For further product information and changes, please visit our website at [www.fleetwoodrv.com](http://www.fleetwoodrv.com) or contact your local Fleetwood dealer. Prices, materials, design and specifications are subject to change without notice. All weights, fuel, liquid capacities and dimensions are approximate. Fleetwood has designed its recreational vehicles to provide a variety of uses for customers. Each vehicle features optimal seating, sleeping, storage and fluid capacities. The user is responsible for selecting the proper combination of loads (i.e. occupants, equipment, fluids, cargo, etc.) to ensure that the vehicle's capacities are not exceeded.

