



www.FleetwoodRV.com

**FORD® CHASSIS**



Model: Ford®

Engine: 7.3L Triton V8

Transmission: Ford® 6-Speed, Automatic w/Overdrive

Alternator: 175 Amp

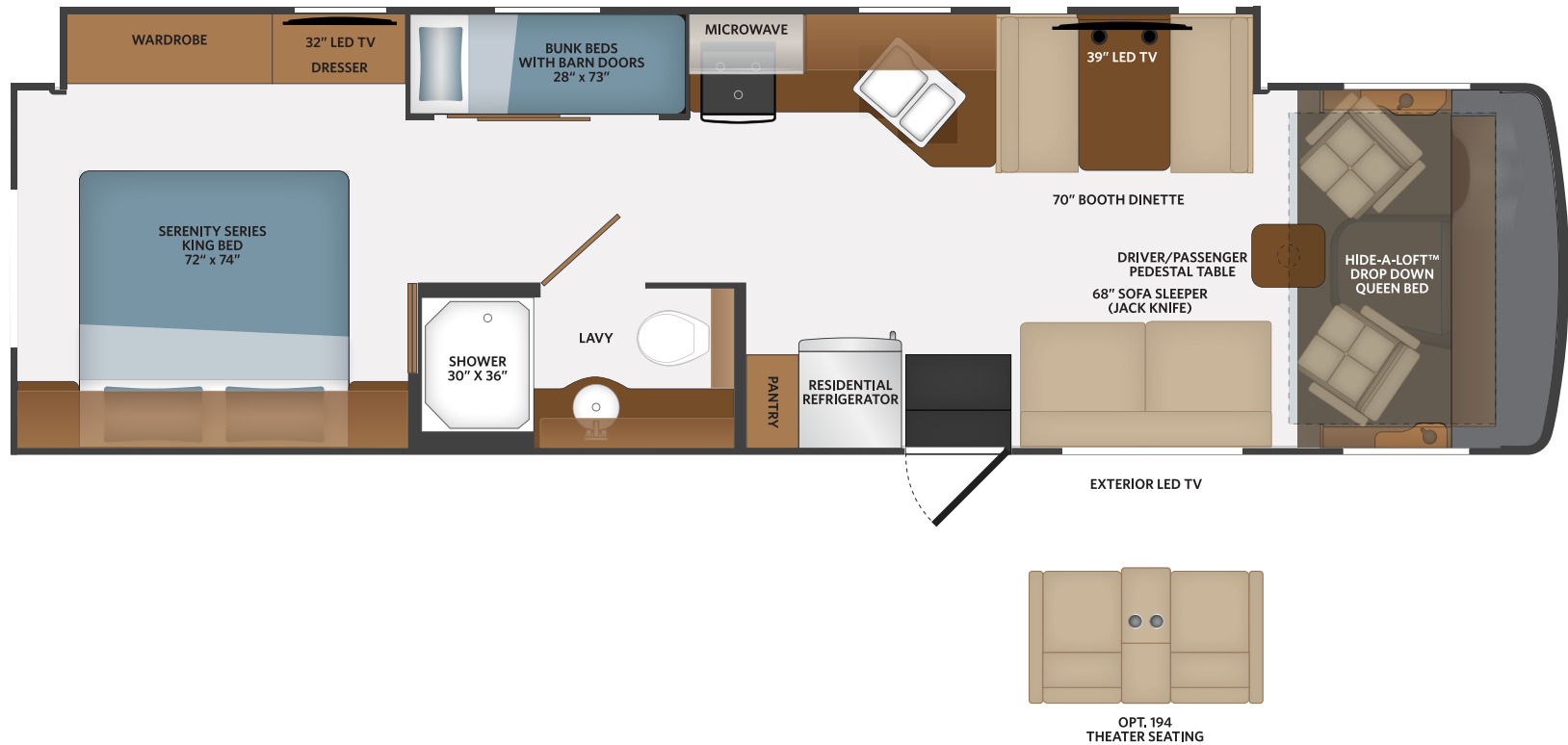
Torque: 468 lb.-ft. @ 3,000 RPM

Horsepower: 350HP @ 3,900 RPM

**34J** Options: 096, 105, 194, 230, 471, 953

**TOP FLOORPLAN FEATURES**

- Sleeps up to 8
- Bunk Beds
- Full Length Wardrobe
- Sofa Sleeper
- Pass through Exterior Storage
- Exterior Kitchen w/Mini Frig, Microwave, Sink and Storage
- 22,000K Chassis



<b>FLAIR OPTIONS</b>	096	KING® Universal Satellite System	230	Roof Vent Rain Covers
	105	Dometic 8CF Double Door Refrierator - LP	471	Steering Stabilizer System
	194	Theater Seating	953	Power Driver Seat

**FLOORPLAN 34J**

**2022** | CLASS A GAS  
**FLAIR**