



www.FleetwoodRV.com

FORD® CHASSIS



Model: Ford®

Engine: 7.3L Triton V8

Transmission: Ford® 6-Speed, Automatic w/Overdrive

Alternator: 175 Amp

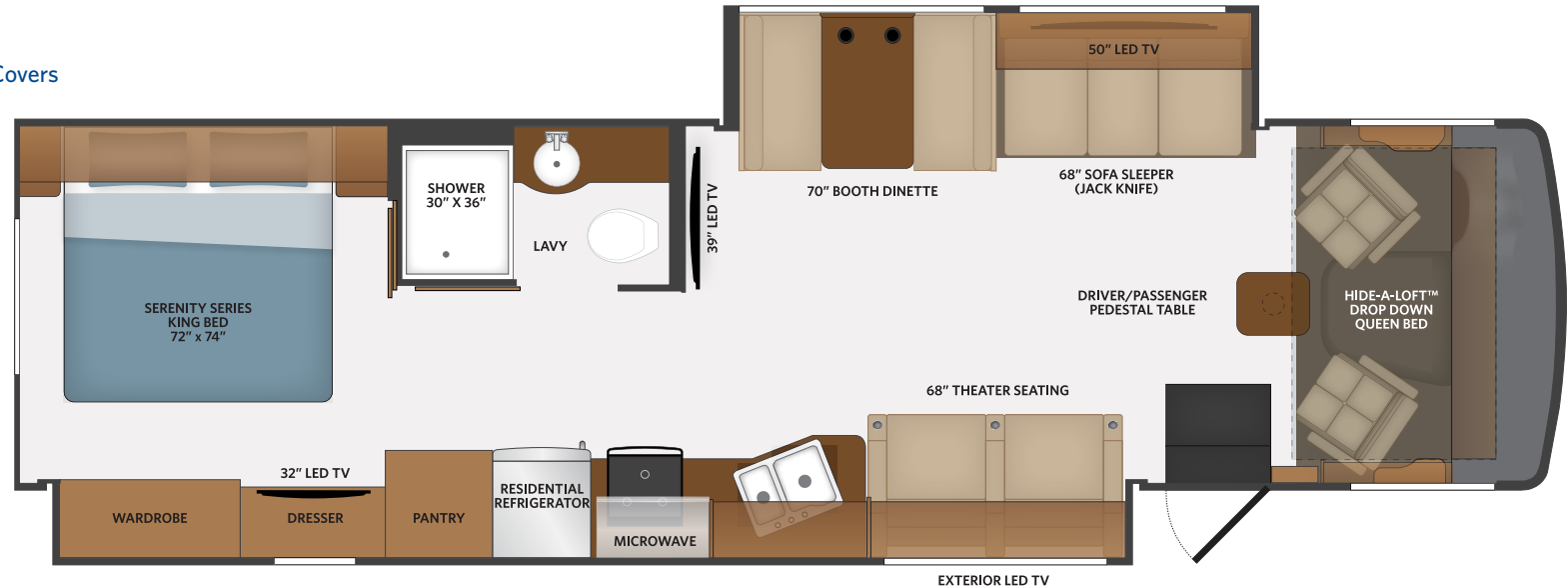
Torque: 468 lb.-ft. @ 3,000 RPM

Horsepower: 350HP @ 3,900 RPM

35R Options: 096, 105, 126, 131, 230, 471, 953

TOP FLOORPLAN FEATURES

- Sleeps up to 6
- Spacious Living Area
- Theater Seating
- Reduced Shower Height Step-up
- Solid Surface Galley Top and Sink Covers
- 2000W Inverter
- Exterior LED TV 50"
- 22,000K Chassis



FLAIR
OPTIONS

096	KING® Universal Satellite System	194	Theater Seating	343	Dual A/C w/EMS — Residential Refrigerator
105	Dometic 8CF Double Door Refrierator - LP	230	Roof Vent Rain Covers	471	Steering Stabilizer System
126	Washer/Dryer — All in one combo	331	5.5KW Generator w/Dual A/C	830	Facing Dinette
131	Washer/Dryer — Stackable	342	Dual A/C w/EMS — LP Refrigerator	953	Power Driver Seat

FLOORPLAN **35R**

20
22 | CLASS A GAS
FLAIR